



## **SPARE PARTS LIST**

### **COLUMBUS WHEEL SPINNER SP85-HD**

Description, spare parts number and the chassis number must always be stated in your order.

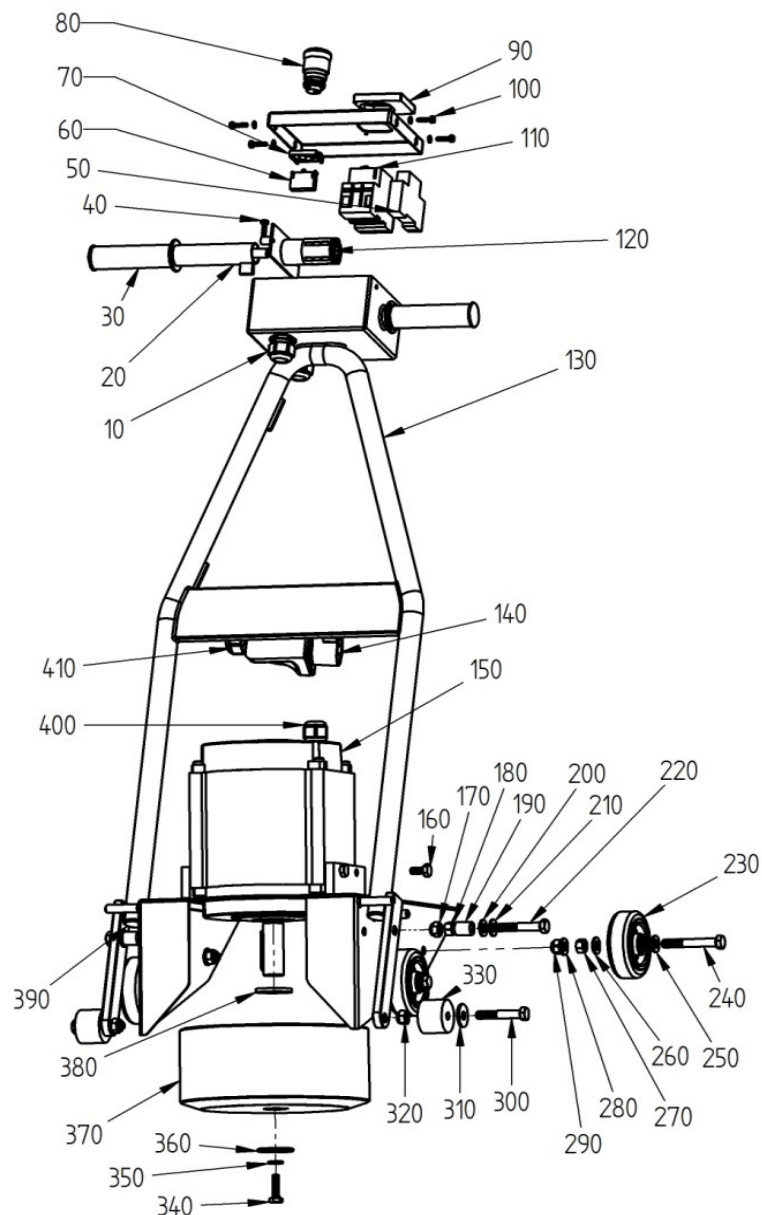
The letters within brackets ( ) correspond to the letters in the attached wiring diagram.

#### **No.**

SP85 10  
SP85 20  
SP85 30  
SP85 40  
SP85 50  
SP85 60-80  
SP85 90  
SP85 100  
SP85 101  
SP85 110  
SP85 120  
SP85 130  
SP85 140  
SP85 150  
SP85 160  
SP85 170-220  
SP85 230  
SP85 240-290  
SP85 300-320  
SP85 330  
SP85 340-360  
SP85 370  
SP85 380  
SP85 390  
SP85 400  
SP85 410

#### **Description of part**

Cable sleeve M25 - for the junction box  
Kit - starting handle - forward & reverse  
Hand grip  
Stop screw for the stating handle  
Circuit breaker at power failure (P1)  
Kit - emergency stop including adaptor and contact block (S3)  
Kit - plastic cover for start and stop button  
Kit - attachment screw for the junction box cover  
Junction box cover  
Surge protector - current (MS)  
Starting switch for the spinning wheel (RS)  
Shaft  
Contact for the power intake  
Electric motor (M)  
Kit - attachment screws for the electric motor  
Kit attachment screws for the shaft  
Machine wheel  
Kit - wheel shaft bolt  
Kit - attachment screw for the support wheel  
Support wheel - rubber  
Kit - screw and washers for locking of the spinning wheel  
Spinning wheel  
Inner support washer for the spinning wheel  
End plug for the shaft  
Cable sleeve for the electric motor M25  
Cable sleeve for the power intake M20



Columbusmaskiner AB  
Hejargaten 13  
632 29 Eskilstuna  
Sweden

Phone  
+ 46 724 544 244

E-mail  
[info@columbusmaskiner.se](mailto:info@columbusmaskiner.se)  
Web address  
[www.columbusmaskiner.se](http://www.columbusmaskiner.se)